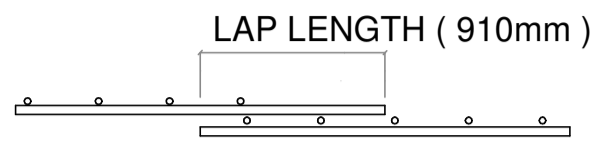


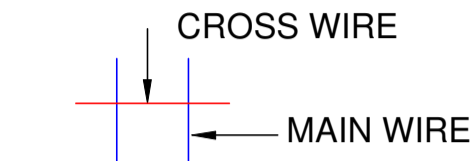
GENERAL NOTES :

A) WELDED MESH STANDARD LAP DETAILS :

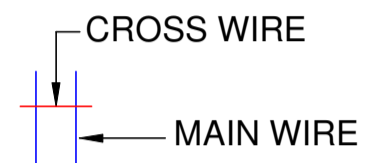
Unless specified by the original engineer's drawing other than the following lap recommendation, the lap length shall comply to the original engineer's design as noted in their drawings. Our recommendation shall be in accordance to EC2 table 8.4 under clause 8.7.5.2 as follows :



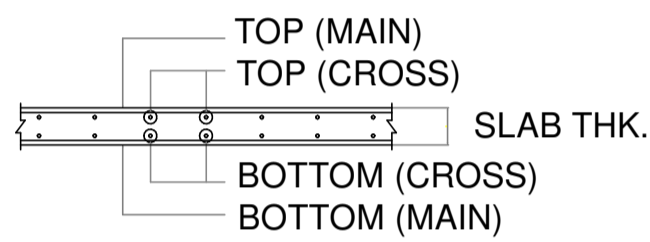
FULL YIELD STRENGTH LAP CONSIST OF 2 WELDED INTERSECTION.



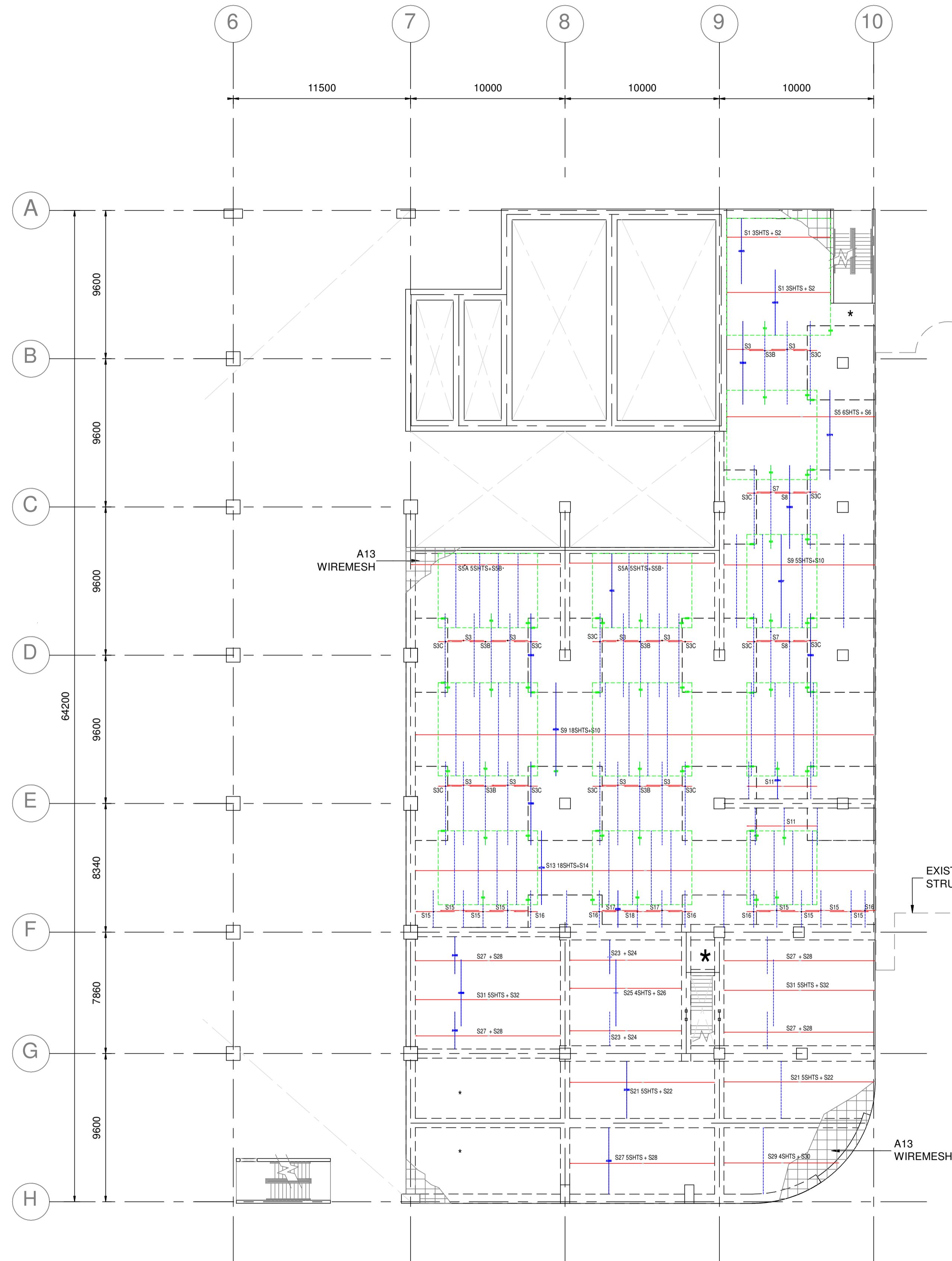
PWMSB RA / RDA SERIES



PWMSB RB SERIES



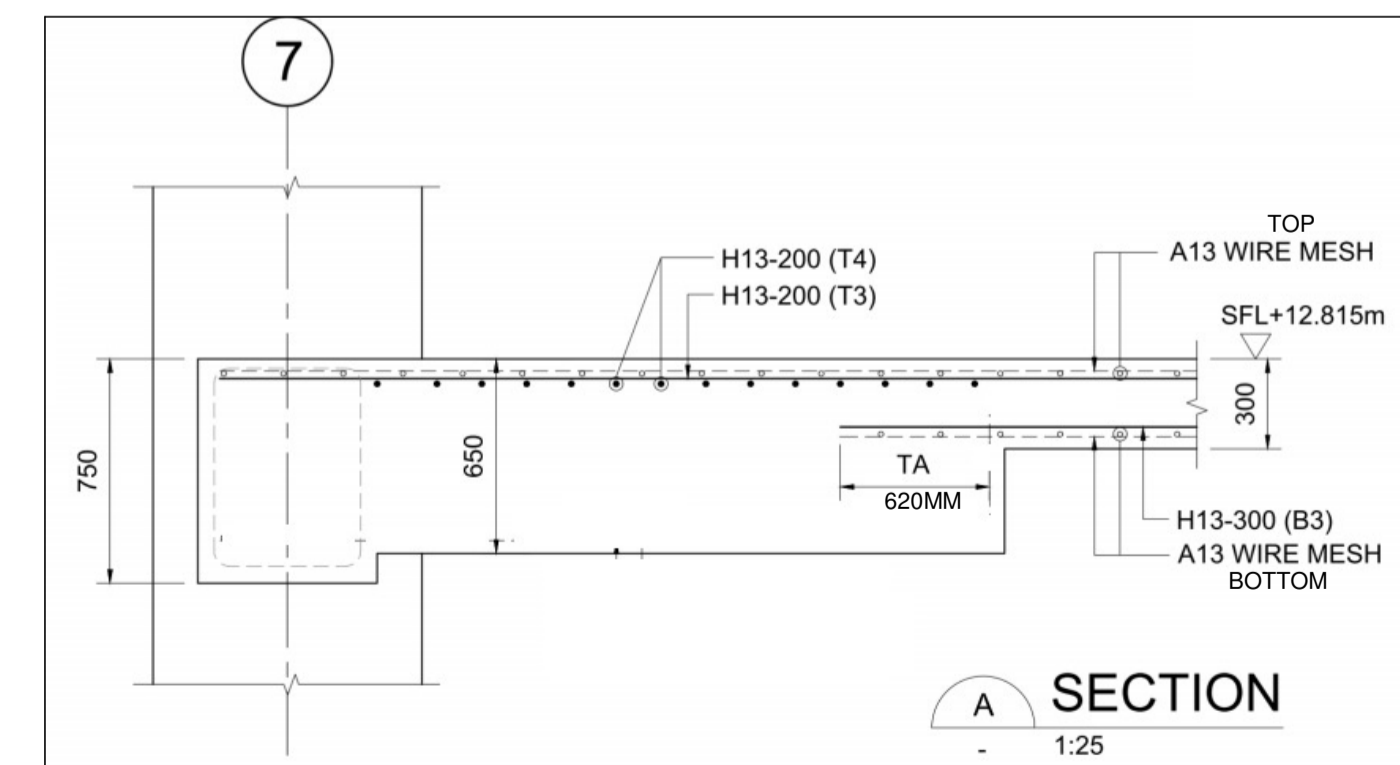
PWMSB SLAB TYPICAL LAYERING



2ND FLOOR PLAN AT EL +12.815m
BOTTOM REINFORCEMENT LAYOUT

BOTTOM REINFORCEMENT

PWM REF ITEM	MKG	OVERALL DIMENSION		QTY	REMARK
		L (M)	W (M)		
RA 13	S1	4.25	2.40	6	
RA 13	S2	4.25	2.40	2	
RA 13	S3	5.40	2.35	10	
RA 13	S3B	5.40	2.35	5	
RA 13	S3C	5.40	1.55	13	
RA 13	S5	5.80	2.20	6	
RA 13	S6	5.80	2.20	1	
RA 13	S5A	4.80	2.40	10	
RA 13	S5B	4.80	2.40	2	
RA 13	S7	5.40	2.10	2	
RA 13	S8	5.40	2.10	2	
RA 13	S9	6.05	2.45	23	
RA 13	S10	6.05	2.45	2	
RA 13	S11	2.40	4.55	2	
RA 13	S13	4.80	2.45	18	
RA 13	S14	4.80	2.45	1	
RA 13	S15	2.40	2.50	8	
RA 13	S16	2.40	1.55	5	
RA 13	S17	2.40	2.35	2	
RA 13	S18	2.40	2.35	1	
RA 13	S21	3.70	2.40	10	
RA 13	S22	3.70	2.40	2	
RA 13	S23	2.20	4.10	2	
RA 13	S24	2.20	4.10	2	
RA 13	S25	4.30	2.20	4	
RA 13	S26	4.30	2.20	1	
RA 13	S27	2.40	5.35	4	
RA 13	S28	2.40	5.35	4	
RA 13	S29	4.30	2.20	4	
RA 13	S30	4.30	2.20	1	
RA 13	S31	4.30	2.40	10	
RA 13	S32	4.30	2.40	2	



DISCLAIMER NOTICE :

1. PWMSB Fabric reinforcement of concrete complies fully to MS 145:2014 or equivalent and have a characteristic yield strength of 500N/mm² (approx. X 70,000psi) using wires / bars complying to MS 146:2014 or equivalent.
2. Wire / Bar ductility class shall be either class 500A / 500B or a combination of both.
3. Where PWMSB Fabric is not shown in the drawing, please refer to engineer's original drawings for steel bar detail.
4. This drawing must be read in conjunction with all structural engineer's original drawings at all times .
5. Steel reinforcement in concrete shall be base on Concrete Strength class 25/30 .

REVISION HISTORY :

Rev.No	Rev.Date	Description	By
8	24.8.2023	REV8	NIZA
7	24.8.2023	REV7	NIZA
6	23.8.2023	REV6	NIZA
5	16.8.2023	REV5	NIZA
4	8.8.2023	REV4	NIZA
3	7.8.2023	REV3	NIZA
2	7.8.2023	REV2	NIZA
1	8.6.2023	REV1	NIZA

PROJECT TITLE :

PROPOSED ADDITIONS AND ALTERATIONS TO EXISTING LIGHT INDUSTRIAL FACTORY COMPRISING OF A NEW 2-STOREY DISTRICT COOLING PLANT WITH MEZZANINE, ANCILLARY OFFICES AND WATER TANKS ON LOT 18519K MK18 AT 10 ANG MO KIO INDUSTRIAL PARK 2.

PROJECT DETAILS :

SECOND STOREY ZONE 3 & 6
BOTTOM REINFORCEMENT

DEVELOPER :

SINGAPORE DISTRICT COOLING AMK PTE LTD
2 KALLANG SECTOR SINGAPORE 349277
Tel: +65 6583 8888, Email: sales@sdcl.com.sg, Website: www.sdcl.com.sg
Tel: +65 6916 8888, Website: www.apgroup.com.sg

CONSULTANT :

Jacobs
JACOBS INTERNATIONAL CONSULTANTS PTE LTD
150 Beach Road, Gateway West 34th Floor Singapore 189720
Tel: 65910350 Fax: 62984739 www.jacobs.com
UEN : 198005658K

CONTRACTOR :

STEEL FABRIC MANUFACTURER :

PROGRESS WELDED MESH
SDN. BHD Company No. : 201201031154 (1015640-A)

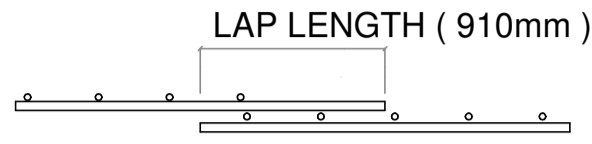
106 Jalan Cyber 5,
Senai Industrial Estate III,
81400 Senai, Johor.
Tel : 07-599 1800
Fax : 07-599 3366
Email : pwmsb@progressweldedmesh.my

Scale : N.T.S.	Prepared by : NIEZA
Preparation Date : 09.06.2023	Checked by : DIN
Drawing No : PC / 23 / 105 / SS	Sheet No : 1

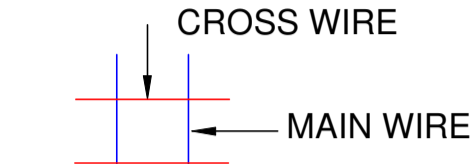
GENERAL NOTES :

A) WELDED MESH STANDARD LAP DETAILS :

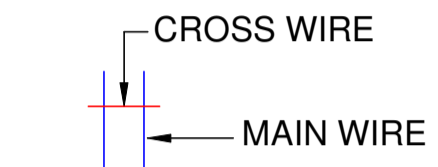
Unless specified by the original engineer's drawing other than the following lap recommendation, the lap length shall comply to the original engineer's design as noted in their drawings. Our recommendation shall be in accordance to EC2 table 8.4 under clause 8.7.5.2 as follows :



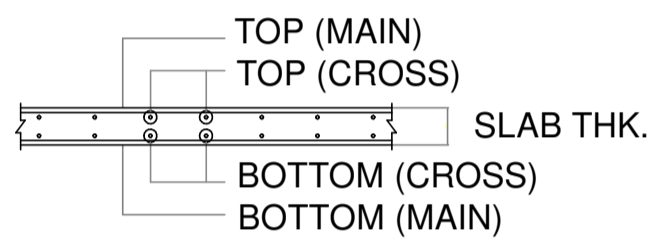
FULL YIELD STRENGTH LAP CONSIST OF 2 WELDED INTERSECTION.



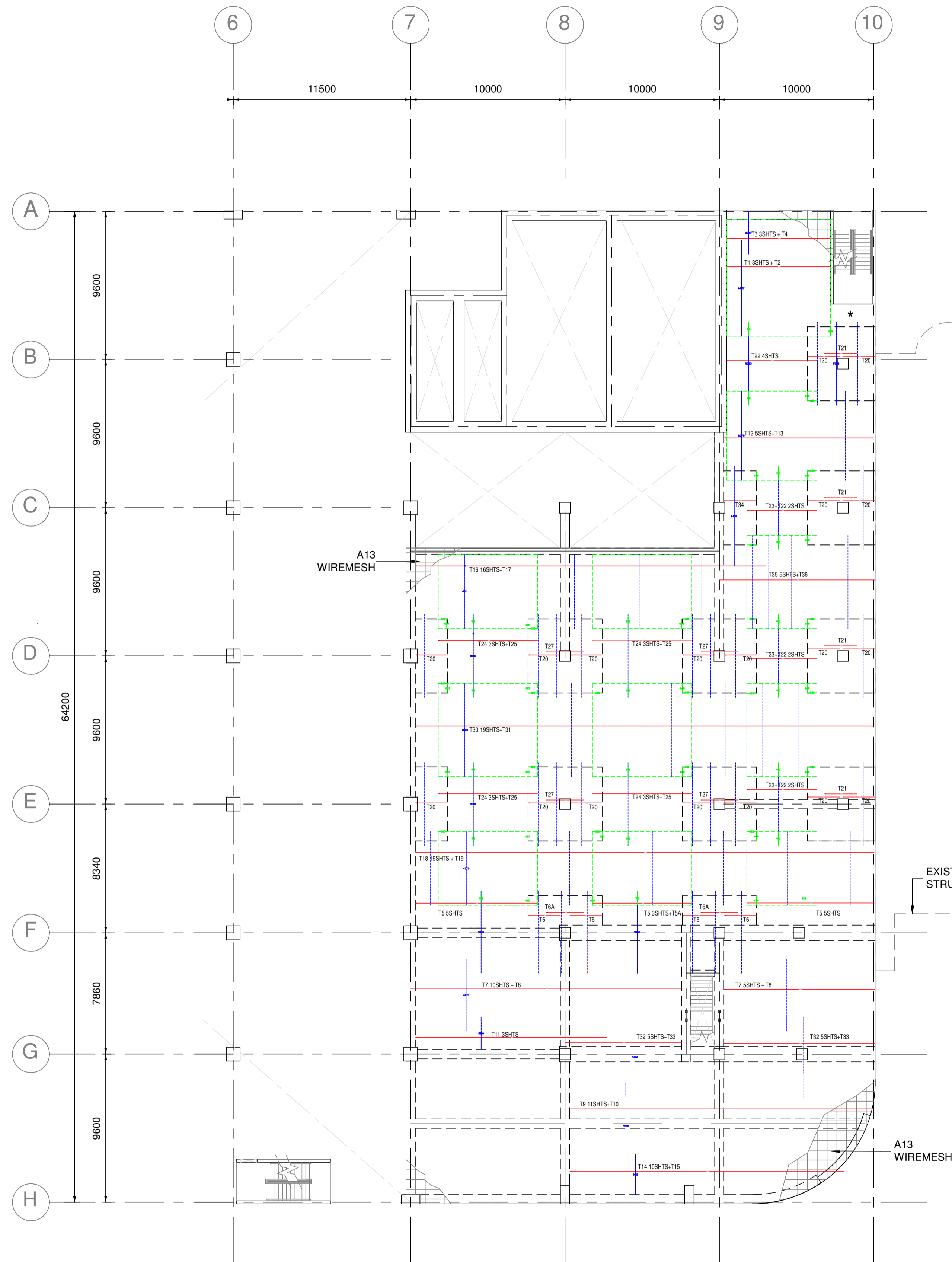
PWMSB RA / RDA SERIES



PWMSB RB SERIES



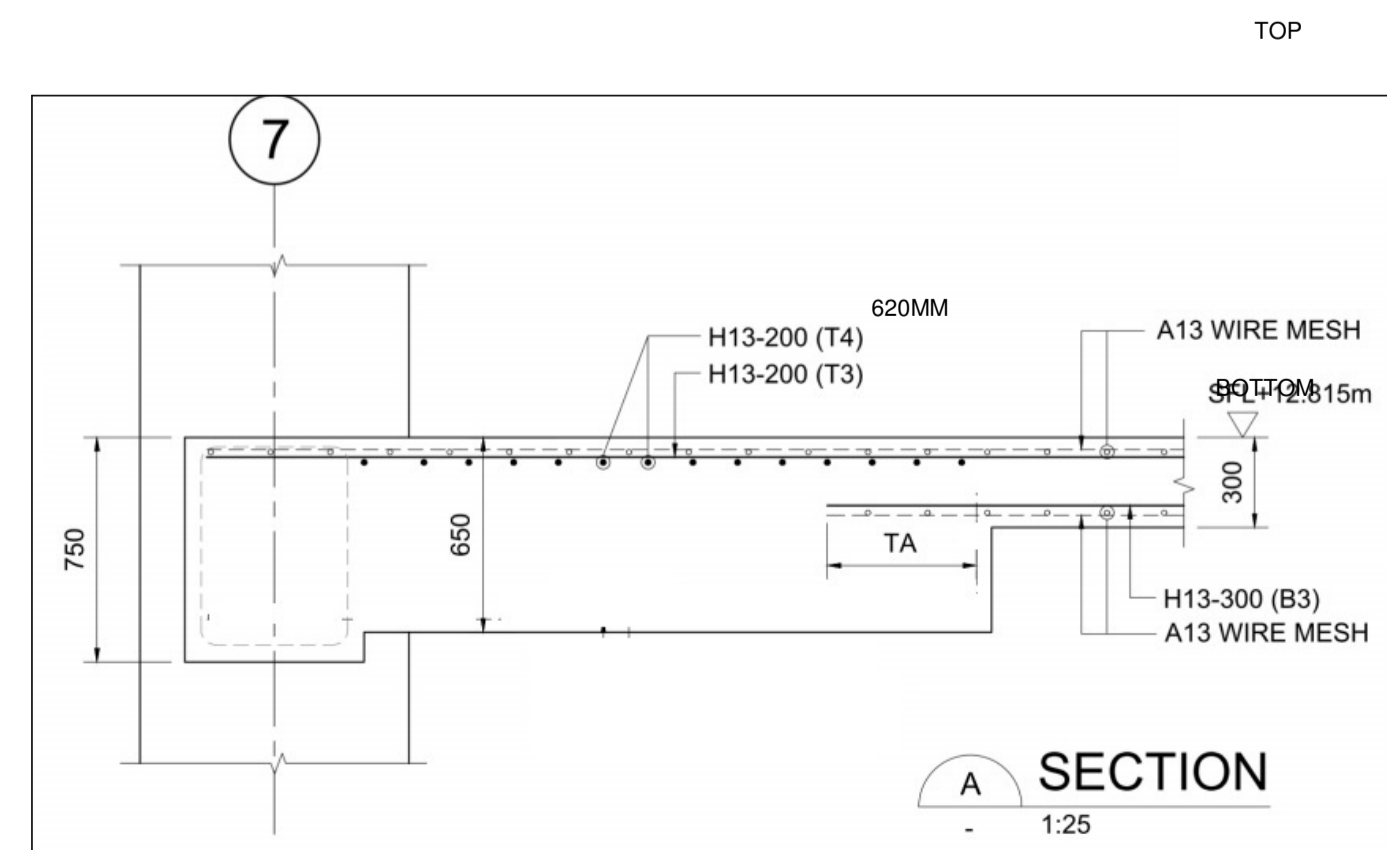
PWMSB SLAB TYPICAL LAYERING



2ND FLOOR PLAN AT EL +12.815m
TOP REINFORCEMENT LAYOUT

TOP REINFORCEMENT

PWM REF ITEM	MKG	OVERALL DIMENSION		QTY	REMARK
		L (M)	W (M)		
RA 13	T1	6.25	2.40	3	
RA 13	T2	6.25	2.40	1	
RA 13	T3	2.80	2.40	3	
RA 13	T4	2.80	2.40	1	
RA 13	T5	5.30	2.40	13	
RA 13	T5A	5.30	2.30	1	
RA 13	T6	5.30	2.10	4	
RA 13	T6A	5.30	2.40	2	
RA 13	T7	4.70	2.50	15	
RA 13	T8	4.70	2.50	2	
RA 13	T9	5.50	2.50	11	
RA 13	T10	5.50	2.50	1	
RA 13	T11	2.10	4.70	3	
RA 13	T12	5.80	2.40	5	
RA 13	T13	5.80	2.40	1	
RA 13	T14	2.65	2.45	10	
RA 13	T15	2.65	2.45	1	
RA 13	T16	4.80	2.20	16	
RA 13	T17	4.80	2.20	1	
RA 13	T18	4.80	2.40	19	
RA 13	T19	4.80	2.40	1	
RA 13	T20	5.40	2.10	18	
RA 13	T21	5.40	2.10	4	
RA 13	T22	5.40	2.15	10	
RA 13	T23	5.40	2.15	3	
RA 13	T24	5.40	2.30	12	
RA 13	T25	5.40	2.30	4	
RA 13	T27	5.40	2.40	4	
RA 13	T28	5.40	2.15	-	
RA 13	T29	5.40	2.15	-	
RA 13	T30	6.05	2.40	19	
RA 13	T31	6.05	2.40	1	
RA 13	T32	5.20	2.05	10	
RA 13	T33	5.20	2.05	2	
RA 13	T34	6.50	2.10	2	
RA 13	T35	6.05	2.45	5	
RA 13	T36	6.05	2.45	1	



DISCLAIMER NOTICE :

- PWMSB Fabric reinforcement of concrete complies fully to MS 145:2014 or equivalent and have a characteristic yield strength of 500N/mm² (approx. X 70,000psi) using wires / bars complying to MS 146:2014 or equivalent.
- Wire / Bar ductility class shall be either class 500A / 500B or a combination of both.
- Where PWMSB Fabric is not shown in the drawing, please refer to engineer's original drawings for steel bar detail.
- This drawing must be read in conjunction with all structural engineer's original drawings at all times .
- Steel reinforcement in concrete shall be base on Concrete Strength class 25/30 .

REVISION HISTORY :

Rev.No	Rev.Date	Description	By
8	24.8.2023	REV8	NIZA
7	24.8.2023	REV7	NIZA
6	23.8.2023	REV6	NIZA
5	16.8.2023	REV5	NIZA
4	8.8.2023	REV4	NIZA
3	7.8.2023	REV3	NIZA
2	7.8.2023	REV2	NIZA
1	8.6.2023	REV1	NIZA

PROJECT TITLE :

PROPOSED ADDITIONS AND ALTERATIONS TO EXISTING LIGHT INDUSTRIAL FACTORY COMPRISING OF A NEW 2-STOREY DISTRICT COOLING PLANT WITH MEZZANINE, ANCILLARY OFFICES AND WATER TANKS ON LOT 18519K MK18 AT 10 ANG MO KIO INDUSTRIAL PARK 2.

PROJECT DETAILS :

SECOND STOREY ZONE 3 & 6
TOP REINFORCEMENT

DEVELOPER :

SINGAPORE DISTRICT COOLING AMK PTE LTD
2 KALLANG SECTOR SINGAPORE 349277
Tel: +65 6583 8888, Email: sales@sdcl.com.sg, Website: www.sdcl.com.sg
Tel: +65 6916 8888, Website: www.apgroup.com.sg

CONSULTANT :

Jacobs
JACOBS INTERNATIONAL CONSULTANTS PTE LTD
150 Beach Road, Gateway West 34th Floor Singapore 189720
Tel: 65910350 Fax: 62947739 www.jacobs.com
UEN : 19900552K

CONTRACTOR :

HG

STEEL FABRIC MANUFACTURER :

PROGRESS WELDED MESH
SDN. BHD Company No. : 201201031154 (1015640-A)

106 Jalan Cyber 5,
Senai Industrial Estate III,
81400 Senai, Johor.
Tel : 07-599 1800
Fax : 07-599 3366
Email : pwmsb@progressweldedmesh.my

Scale : N.T.S.	Prepared by : NIEZA
Preparation Date : 09.06.2023	Checked by : DIN
Drawing No : PC / 23 / 105 / SS	Sheet No : 2